



Wisconsin Afterschool Network (WAN) Governance Structure

Approved at the 2/15/08 WAN State Leadership Team meeting

VISION AND GOALS

Mission:

To support schools and community partners in delivering high quality afterschool programs to diverse school age children and youth that increase academic achievement, enhance youth development and encourage family involvement.

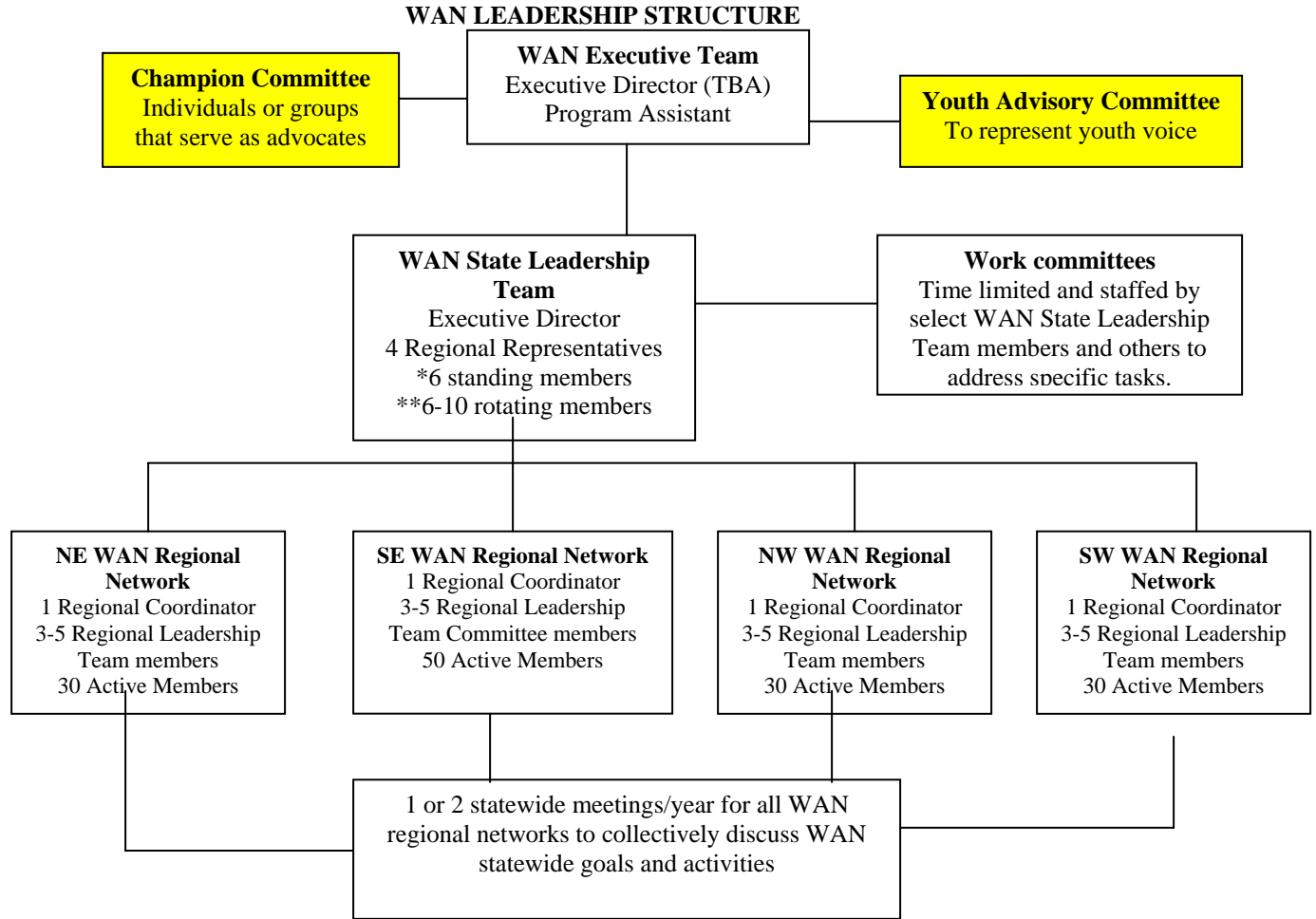
Vision:

All Wisconsin school age children and youth have the opportunity to attend a high quality afterschool program.

Goals:

- **Partnership:** Create a sustainable structure of statewide, regional, and local partnerships, particularly school-community partnerships, focused on supporting high quality afterschool programs and influencing policy development at all levels
- **Policy:** Support the development and growth of statewide policies to secure resources needed to sustain new and existing afterschool programs.
- **Program Quality:** Support statewide systems to ensure programs are of high quality.

WISCONSIN AFTERSCHOOL NETWORK



Note: Proposed future expansions are included in the yellow boxes.

* Six standing members of the WAN State Leadership Team approved on yearly basis.

** 2 year terms with a 2 term limit for the 6-10 rotating members

The network's governance structure is composed of a WAN Executive Team, WAN State Leadership Team, four WAN Regional Networks, and yearly or twice yearly statewide meetings for all WAN Regions. Proposed innovations include the development of a Afterschool Champion Committee and a Youth Advisory Committee.

Other WAN supporters can choose an "Affiliate" partner status and be kept informed by joining the WAN list-serve and attending WAN state, regional and local events as their interest and time permits.